



GAT MONTHLY MEMBERSHIP PROGRESS REPORT

Results as of: 10/31/2024

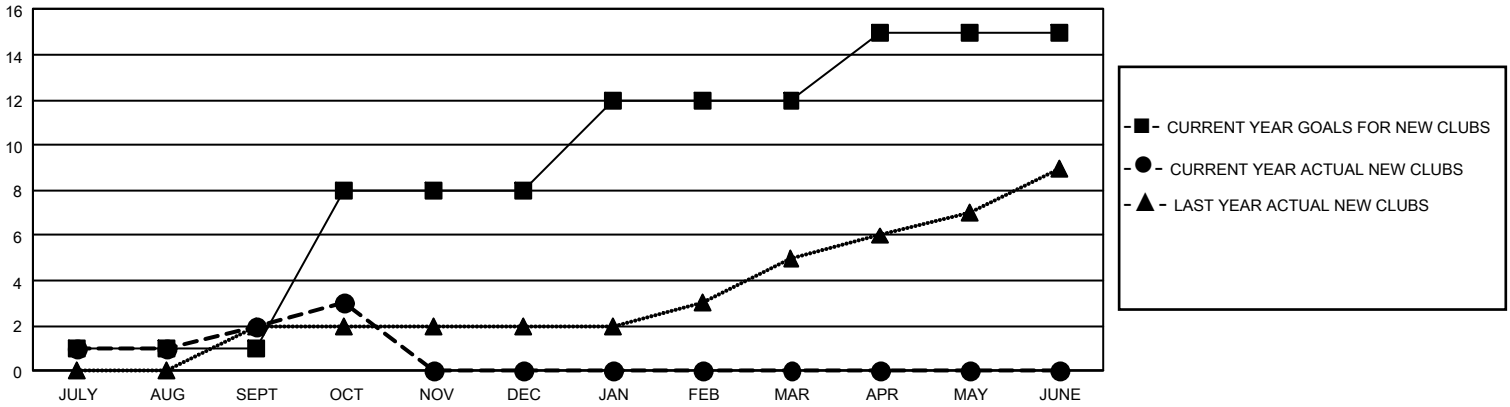
GMT Constitutional Area 5 - J, Group I

REPORT DOES NOT INCLUDE CLUBS IN UNDISTRICTED AREAS.

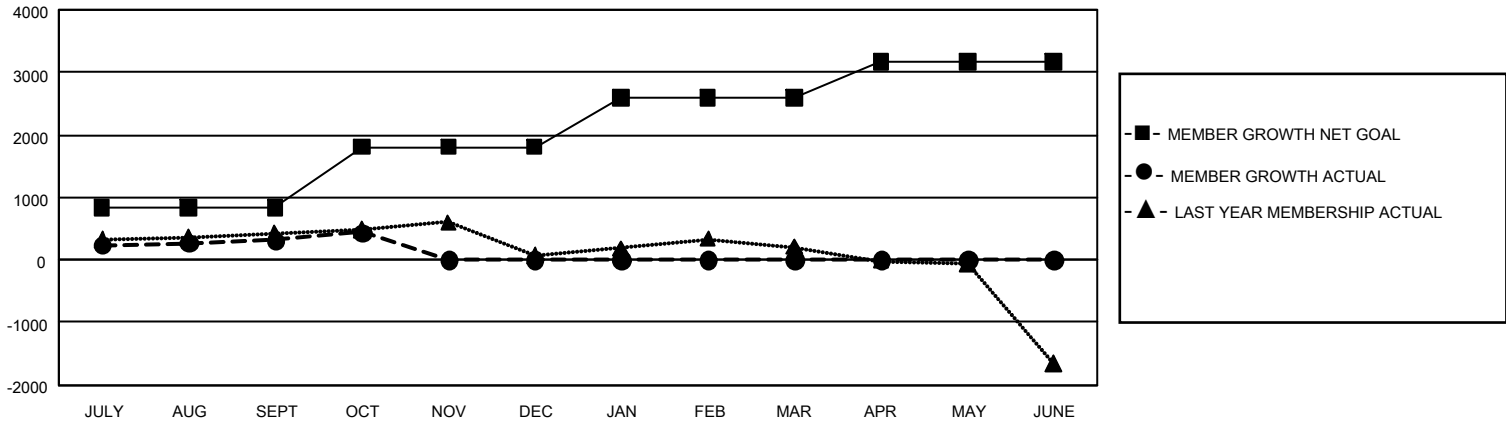
Clubs			
RESULTS FOR 2024-2025			
QUARTER	NEW CLUB GOAL	NEW CLUBS	DROPPED CLUBS
JULY/AUG/SEPT	3	2	1
OCT/NOV/DEC	21	1	0
JAN/FEB/MAR	12	0	0
APR/MAY/JUNE	9	0	0

Members			
RESULTS FOR 2024-2025			
QUARTER	MEMBER GROWTH NET GOAL	MEMBER GROWTH ACTUAL	DROPPED MEMBERS ACTUAL (including transfers)
JULY/AUG/SEPT	830	1,103	681
OCT/NOV/DEC	981	291	141
JAN/FEB/MAR	785	0	0
APR/MAY/JUNE	571	0	0

GOALS AND ACTUAL NEW CLUBS CUMULATIVE



GOALS AND ACTUAL MEMBERS CUMULATIVE



DROPPED CLUBS: 1	533 CLUBS OF 1,092 ADDED 1 OR MORE NEW MEMBERS	<u>GENDER DISTRIBUTION</u>	
		MALE 30,250 (78.67%) FEMALE 8,196 (21.31%) NON BINARY 0 (0.00%) PREFER NOT TO ANSWER 6 (0.02%)	
<u>DROPPED MEMBERS</u>		CLICK HERE FOR CUMULATIVE MEMBERSHIP DATA	TOTAL FAMILY UNIT MEMBERS 0
DECEASED 87 CLUB CANCELLED 0 OTHER 688 TOTAL 775	FAMILY MEMBERS PAYING HALF DUES 0		